



## THE DEFINITIVE GUIDE TO SPAWN NEWSSTAND EDITIONS

SPAWNWORLD.COM

### What are Newsstand Editions?

Like most comics of the early 90s, Spawn was sold in two distinct formats: Direct Edition and Newsstand Edition. Generally speaking, Direct Edition issues were sold from comic book stores, and Newsstand Edition issues were sold from places like grocery stores, drug stores, and of course, newsstands.

In terms of collecting, Newsstand Editions differ from Direct Editions in a few important ways:

- First, they were generally sold on spinner racks or open shelves, often to non-collectors. This means that issues that survive are typically in worse condition than their Direct Edition counterparts.
- Second, they were typically printed on lower quality paper that was thinner, and more susceptible to damage, making high grade copies even more difficult to find.
- Third, they were sometimes return-able. Meaning that unsold copies could be returned to the publisher by the retailer for a refund. This further decreased the number of issues remaining in the market today.

### Spawn Newsstand Editions

Spawn Newsstand Editions were sold (with a few exceptions) until August 2004. They were generally printed on a thinner newsprint paper, with a thinner paperstock for the cover than the direct editions. They almost always have a barcode on the front cover (unlike the direct editions), which is the easiest way to spot them.

### A Note about Variants:

Below you'll find a complete checklist of every known Spawn Newsstand Edition, including all known production variants. But what constitutes a variant? Occasionally there were production changes on newsstand issues, resulting in variants. Most often, these involved the barcode itself, but sometimes they involved the contents, or the paper quality of the book. This list includes intentional changes that resulted in significant differences for all remaining issues published down the line. It does not include production errors that resulted in only an issue or two with an abnormality.

# FAQ

## How can you tell the difference between the various paper qualities?

It's very easy to feel the differences when examining both newsstand and direct editions side-by-side, but it can be difficult to describe otherwise. The easiest way to quantify the difference is to weigh the books.

## Are there Newsstand Editions of variant covers?

No. Spawn books with variant covers (such as issue #100, or Spawn: The Dark Ages #1) only received 1 newsstand edition, which uses the "standard" cover (regardless of the number of variant covers).

## Is a barcode and a UPC code the same thing?

Technically, no. A UPC code is a specific format of barcode, although the name tends to be used generically by the public (kind of like Kleenex).

## Why are some of the printed barcodes different?

There are a few styles of barcode that were used:

- "Standard" barcodes with no additional text.
- "Newsstand" barcodes with the word "NEWSSTAND" above the code.
- "ADS Newsstand" barcodes with the text "ADS NEWSSTAND" above the code.
- "Thin" barcodes that are roughly half the height of standard codes.

I don't know why the style changed occasionally. Sometimes an error was made on the barcode (issues 101-105 in particular) in which a correction sticker was placed on top.

## Why do some books have different barcode numbers?

For Spawn issues 16-77, Spawn had two different, concurrent distributors. This resulted in books with different numbers on the barcode. For collecting, the best way to organize the books is by the distributor code, which is the first group of 5 digits in the barcode. Spawn used the following codes: (see table on right)

## Why did they stop making Newsstand Editions?

Presumably, they became unprofitable. As far as I'm aware, Spawn was the last Image Comics book with a newsstand edition (it was also the first!).

## Were Newsstand Editions released 1:100 from Direct Editions?

No. Part of the confusion with this claim comes from semantics. In discussing comics, ratios like 1:25, or 1:100 refer to retailer incentives. Meaning, a retailer would have to order 25 standard issues to receive 1 incentive issue, resulting in a 1:25 incentive. It does not refer to how many were printed. Newsstand Editions were never incentive issues.

## Ok, but are there 100 standard issues for every one newsstand?

Not necessarily. Spawn print sizes are not publicly released. The best we can do is to make a guess based on industry patterns and order numbers from Diamond distribution.

- We can reasonably assume that newsstands were printed at a low percentage of the total print run



Spawn Barcode Distributor Codes

Issue	Primary	Secondary
1-15	70989	n/a
16-23	70989	73361
24-45	70992	73361
46-49	74470	73361
50	70989	74851
51-68	74470	73361
69-71	n/a	73361
72-77	14302	73361
78-97	14302	n/a
98-99	74470	n/a
100	25274	n/a
101-102	74470	n/a
103	74470 & 14302	n/a
104-137	74470	n/a

for the issue.

- We can reasonably assume that the ratio of Newsstand to Direct Editions declined as time went on.
- We can reasonably assume that there are fewer Newsstand Editions that survive in circulation because of return-ability and clientele.

### **But someone said that 99% of comics released by Image Comics were Direct Editions, with only 1% being newsstands?**

It's not possible to determine the actual percentage with currently available data. Image Comics has not released any concrete data on the ratio (nor has McFarlane).

### **Why do some barcodes have a sticker placed over them?**

Some of the barcodes were printed incorrectly, and correction stickers were placed over the top by the publisher. Some stickers also seem to be for regional distribution.

### **Should I try to remove the stickers?**

No. As the stickers were placed there by the manufacturer, they are a part of the original item. They're different than a price sticker added by a retailer.

### **Why are some of the barcode correction stickers different?**

There are 4 distinct types of barcode stickers used:

- "Prices" stickers with US and Canadian retail prices listed.
- "No Prices" stickers with no prices or text except for the barcode.
- "E" stickers with a lower-case "e" icon preceding the barcode.
- "Canada" stickers with Canadian retail price listed.

I've not yet determined why the sticker changes were made, although some appear to be intended for distribution to different regions.

### **Where is Curse of the Spawn 17?**

Although copies of this book have been found, it would appear it was never fully distributed. Fewer than 10 copies are known to exist.

### **What's the deal with issue 64?**

This issue is unique in that its barcode is on the back cover instead of the front. The primary distributor used the code on the back (no sticker), whereas the secondary distributor covered the code with a plain white sticker, and placed a new barcode "e" sticker on the front cover (with an updated code).

### **Why are issues 69-71 so hard to find?**

Unlike most newsstand issues, these were printed on thick, glossy paper, identical to the Direct Editions. They were only released by the secondary distributor, none from the primary. Likewise, during this same period, Curse of the Spawn issues 16-19 were printed on the same thick, glossy paper. Perhaps there was a problem with the supply of newsprint paper at this time? For whatever the reason, far fewer of these issues are in circulation.





### **Why is issue 111 so hard to find?**

This is still a mystery – but it definitely exists in much lower numbers than other issues.

### **Where are issues 113-115?**

For whatever reason, these issues never made it to market. Interestingly, issue 112 can be found in abnormally high quantities, because it remained on the shelves for 4 months.

### **Where can I find more info or cover photos of these?**

You can find cover photos and detailed issue information for every issue in the SpawnWorld Newsstand Editions section ([spawnworld.com/books/newsstand.htm](http://spawnworld.com/books/newsstand.htm)).

### **How much are these worth?**

I won't try to keep up with current prices in this guide. The best indicators for current value are completed-auction prices. However, the rarity of these books, especially in high grade, can make them considerably more valuable than their direct edition counterparts.

### **Does CGC differentiate Spawn newsstand editions from direct editions?**

Formerly, CGC did not recognize newsstand editions to be unique except for issue #9. More recently, I was told that they had begun to recognize all Spawn newsstand editions except for issues #1-4. However in practice, their policy is applied very inconsistently.

### **Why would CGC treat issue #9 as more unique than the others?**

At least in the past, CGC only differentiated newsstand and direct editions when there were differences beyond just a barcode. Spawn 9 newsstand has a different paperstock than the direct edition, so CGC noticed and labeled it as a newsstand. Ironically, the majority of Spawn newsstand editions have a different paperstock than their direct editions, not just #9.

### **Why wouldn't CGC recognize issues #1-4?**

I have no idea.

### **Do the issues with barcode stickers receive a green label or blue label from CGC?**

I've seen both, but usually green. Their official policy on this seems to be inconsistent.

### **Spawn appeared in an issue of \_\_\_\_\_, why isn't it included here?**

For this list, only issues that meet one of the following criteria have been included:

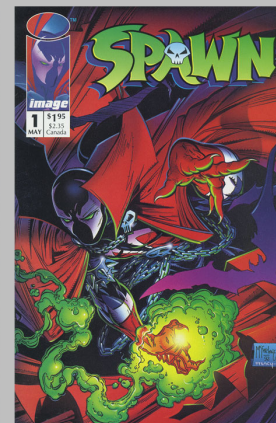
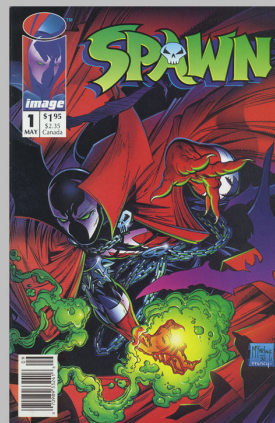
- A first-party (McFarlane) Spawn-related comic (e.g. Spawn, Angela, etc.)
- A second-party (Image) comic with Spawn, or a primary Spawn character in the title (e.g. Spawn/WildCATS, Medieval Spawn/Witchblade, etc.)

### **Spawn issue \_\_\_\_ has a barcode on the front cover, is it a newsstand edition?**

- For issues #1-137, if it has a barcode on the front cover, it is a newsstand edition.
- For issue #64, if it has a barcode on the back cover, it is a newsstand edition.
- For any issue after #137, even if it has a barcode on the front cover, it is not a newsstand edition (issues #192-#199 for example all have barcodes on their front covers).

# NEWSSTAND CHECKLIST

## SPAWN (ONGOING SERIES)



Spawn #1 was the first Image title to be released in a newsstand format. Every Spawn newsstand edition has a barcode printed on the cover (except issue 64). Other differences between newsstand and direct editions are listed here in this checklist.



Spawn #1 was printed on the same paper as the direct edition.

Beginning with issue #2, the month was (usually) removed from the newsstand editions.

The paperstock used for the covers of the newsstand editions became thinner (and lighter)



Thick Direct Edition Cover

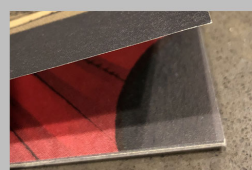


Thin Newsstand Edition Cover

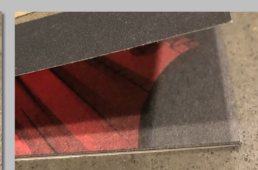
Most noticeable was the change to the interior paper.

The first copies of Issue #2 were released with the same thick newsprint as Issue #1. But mid-production, the paperstock was changed to a thinner, lighter paper. This thinner paper became the standard for newsstand editions (with a few exceptions) until issue 123.

The paper change is easily identified by the weight.



Original newsprint paper



Thinner newsprint paper

☐

#001

- “Clean” inside cover icon
- Newsprint pages (Same as direct)
- Poster on glossy paper

☐

#002  
v01

- Weight ≈ 55g
- Thin cover
- No month in issue number box
- Newsprint pages (same as direct)

☐

#002  
v02

- Weight ≈ 43g
- Thin cover
- No month in issue number box
- Thinner newsprint pages

☐

#003

- Weight ≈ 43g
- Thin cover
- No month in issue number box
- Thinner newsprint pages

☐

#004

- Weight ≈ 43g
- Thin cover
- Thinner newsprint pages
- No Image #0 coupon

☐

#005

- Weight ≈ 43g
- Thin cover
- No month in issue number box
- Thinner newsprint pages
- No poster

☐

#006

- Weight ≈ 43g
- Thin cover
- No month in issue number box
- Thinner newsprint pages



- #007**
- Weight ≈ 43g
  - Thin cover
  - No month in issue number box
  - Thinner newsprint pages
  - No poster



- #008**
- Weight ≈ 43g
  - Thin cover
  - No month in issue number box
  - Thinner newsprint pages
  - No poster



- #009**
- Thin cover
  - No month in issue number box
  - Newsprint pages
  - No poster



- #010**
- Thin cover
  - No month in issue number box
  - Newsprint pages



- #011**
- Thin cover
  - No month in issue number box
  - Newsprint pages
  - Poster on newsprint



- #012**
- Thin cover
  - No month in issue number box
  - Newsprint pages
  - Poster on newsprint



- #013**
- Thin cover
  - No month in issue number box
  - Newsprint pages
  - Poster on newsprint



- #014**
- Thin cover
  - No month in issue number box
  - Newsprint pages



- #015**
- Thin cover
  - No month in issue number box
  - Newsprint pages

Whereas both editions of Spawn #1 included a poster, issues 4, 5, 7, 8, & 9 all had a poster or coupon in the direct editions that the newsstand editions lacked.

Beginning with Spawn #9, direct editions were printed on a thick, glossy paper (top), whereas newsstand edition pages mostly remained on newsprint (bottom).



Beginning with issue #16, Spawn had two concurrent distributors. This resulted in newsstand issues being printed with two different barcode numbers.



The primary code (left) for issue #16 has a distributor code of 70989.

The secondary code (right) for issue #16 has a distributor code of 73361.

☐

**#020**  
**v02**

- 73361 code
- Thin cover
- No month in issue number box
- Newsprint pages

☐

**#021**  
**v01**

- 70989 code
- Thin cover
- No month in issue number box
- Newsprint pages

☐

**#021**  
**v02**

- 73361 code
- Thin cover
- No month in issue number box
- Newsprint pages

☐

**#022**  
**v01**

- 70989 code
- Thin cover
- No month in issue number box
- Newsprint pages

☐

**#022**  
**v02**

- 73361 code
- Thin cover
- No month in issue number box
- Newsprint pages

☐

**#016**  
**v01**

- 70989 code
- Thin cover
- No month in issue number box
- Newsprint pages

☐

**#016**  
**v02**

- 73361 code
- Thin cover
- No month in issue number box
- Newsprint pages

☐

**#017**  
**v01**

- 70989 code
- Thin cover
- No month in issue number box
- Newsprint pages

☐

**#017**  
**v02**

- 73361 code
- Thin cover
- No month in issue number box
- Newsprint pages

☐

**#018**  
**v01**

- 70989 code
- Thin cover
- No month in issue number box
- Newsprint pages

☐

**#018**  
**v02**

- 73361 code
- Thin cover
- No month in issue number box
- Newsprint pages

☐

**#019**  
**v01**

- 70989 code
- Thin cover
- No month in issue number box
- Newsprint pages

☐

**#019**  
**v02**

- 73361 code
- Thin cover
- No month in issue number box
- Newsprint pages

☐

**#020**  
**v01**

- 70989 code
- Thin cover
- No month in issue number box
- Newsprint pages



- ☐ **#023 v01**
- 70989 code
  - Thin cover
  - No month in issue number box
  - Newsprint pages

- ☐ **#023 v02**
- 73361 code
  - Thin cover
  - No month in issue number box
  - Newsprint pages

- ☐ **#024 v01**
- 70992 code
  - Thin cover
  - No month in issue number box
  - Newsprint pages

- ☐ **#024 v02**
- 73361 code
  - Thin cover
  - No month in issue number box
  - Newsprint pages

- ☐ **#025 v01**
- 70992 code
  - Thin cover
  - Newsprint pages

- ☐ **#025 v02**
- 73361 code
  - Thin cover
  - Newsprint pages

- ☐ **#026 v01**
- 70992 code
  - Thin cover
  - No month in issue number box
  - Newsprint pages

- ☐ **#026 v02**
- 73361 code
  - Thin cover
  - No month in issue number box
  - Newsprint pages

- ☐ **#027 v01**
- 70992 code
  - Thin cover
  - No month in issue number box
  - Newsprint pages

- ☐ **#027 v02**
- 73361 code
  - Thin cover
  - No month in issue number box
  - Newsprint pages

The back cover of Spawn #28 newsstand (top) differs from the direct edition (bottom). The ads have been reversed between the inside and outside.



- ☐ **#028 v01**
- 70992 code
  - Thin cover
  - Newsprint pages
  - Inside and outside of back cover are reversed from the direct edition

- ☐ **#028 v02**
- 73361 code
  - Thin cover
  - Newsprint pages
  - Inside and outside of back cover are reversed from the direct edition

- ☐ **#029 v01**
- 70992 code
  - Thin cover
  - No month in issue number box
  - Newsprint pages



☐

#029

v02

- 73361 code
- Thin cover
- No month in issue number box
- Newsprint pages

☐

#030

v01

- 70992 code
- Thin cover
- No month in issue number box
- Newsprint pages

☐

#030

v02

- 73361 code
- Thin cover
- No month in issue number box
- Newsprint pages

☐

#031

v01

- 70992 code
- Thin cover
- No month in issue number box
- Newsprint pages

☐

#031

v02

- 73361 code
- Thin cover
- No month in issue number box
- Newsprint pages

☐

#032

v01

- 70992 code
- Thin cover
- No month in issue number box
- Newsprint pages

☐

#032

v02

- 73361 code
- Thin cover
- No month in issue number box
- Newsprint pages

☐

#033

v01

- 70992 code
- Thin cover
- No month in issue number box
- Newsprint pages

☐

#033

v02

- 73361 code
- Thin cover
- No month in issue number box
- Newsprint pages

☐

#034

v01

- 70992 code
- Thin cover
- No month in issue number box
- Newsprint pages

☐

#034

v02

- 73361 code
- Thin cover
- No month in issue number box
- Newsprint pages

☐

#035

v01

- 70992 code
- Thin cover
- Newsprint pages

☐

#035

v02

- 73361 code
- Thin cover
- Newsprint pages

☐

#036

v01

- 70992 code
- Thin cover
- Newsprint pages

☐

#036

v02

- 73361 code
- Thin cover
- Newsprint pages

☐

#037

v01

- 70992 code
- Thin cover
- No month in issue number box
- Newsprint pages

☐

#037

v02

- 73361 code
- Thin cover
- No month in issue number box
- Newsprint pages

☐

#038

v01

- 70992 code
- Thin cover
- Newsprint pages

☐

#038

v02

- 73361 code
- Thin cover
- Newsprint pages



**#039** • 70992 code  
**v01** • Thin cover  
 • Newsprint pages



**#043** • 70992 code  
**v01** • Thin cover  
 • Newsprint pages



**#039** • 73361 code  
**v02** • Thin cover  
 • Newsprint pages



**#043** • 73361 code  
**v02** • Thin cover  
 • Newsprint pages



**#040** • 70992 code  
**v01** • Thin cover  
 • Newsprint pages



**#044** • 70992 code  
**v01** • Thin cover  
 • Newsprint pages



**#040** • 73361 code  
**v02** • Thin cover  
 • Newsprint pages



**#044** • 73361 code  
**v02** • Thin cover  
 • Newsprint pages



Issue #41 was the last time that the month (or lack thereof) differed from the direct edition.



**#041** • 70992 code  
**v01** • Thin cover  
 • No month in issue number box  
 • Newsprint pages



**#045** • 70992 code  
**v01** • Thin cover  
 • Newsprint pages



**#041** • 73361 code  
**v02** • Thin cover  
 • No month in issue number box  
 • Newsprint pages



**#045** • 73361 code  
**v02** • Thin cover  
 • Newsprint pages



**#042** • 70992 code  
**v01** • Thin cover  
 • Newsprint pages



**#046** • 70992 code  
**v01** • Thin cover  
 • Newsprint pages



**#042** • 73361 code  
**v02** • Thin cover  
 • Newsprint pages



**#046** • 73361 code  
**v02** • Thin cover  
 • Newsprint pages

☐

#048  
v02

- 73361 code
- Thin cover
- Newsprint pages

☐

#054  
v01

- 74470 code
- Thin cover
- Newsprint pages

☐

#049  
v01

- 74470 code
- Thin cover
- Newsprint pages

☐

#054  
v02

- 73361 code
- Thin cover
- Newsprint pages

☐

#049  
v02

- 73361 code
- Thin cover
- Newsprint pages

☐

#055  
v01

- 74470 code
- Thin cover
- Newsprint pages

☐

#050  
v01

- 70989 code
- Thin cover
- Newsprint pages

☐

#055  
v02

- 73361 code
- Thin cover
- Newsprint pages

☐

#050  
v02

- 74851 code
- Thin cover
- Newsprint pages

☐

#056  
v01

- 74470 code
- Thin cover
- Newsprint pages

☐

#051  
v01

- 74470 code
- Thin cover
- Newsprint pages

☐

#056  
v02

- 73361 code
- Thin cover
- Newsprint pages

☐

#051  
v02

- 73361 code
- Thin cover
- Newsprint pages

☐

#057  
v01

- 74470 code
- Thin cover
- Newsprint pages

☐

#052  
v01

- 74470 code
- Thin cover
- Newsprint pages

☐

#057  
v02

- 73361 code
- Thin cover
- Newsprint pages

☐

#052  
v02

- 73361 code
- Thin cover
- Newsprint pages

☐

#058  
v01

- 74470 code
- Thin cover
- Newsprint pages

☐

#053  
v01

- 74470 code
- Thin cover
- Newsprint pages

☐

#058  
v02

- 73361 code
- Thin cover
- Newsprint pages

☐

#053  
v02

- 73361 code
- Thin cover
- Newsprint pages

☐

#059  
v01

- 74470 code
- Thin cover
- Newsprint pages





**#059**  
**v02**

- 73361 code
- Thin cover
- Newsprint pages



**#061**  
**v01**

- 74470 code
- Thin cover
- Newsprint pages



**#061**  
**v02**

- 73361 code
- Thin cover
- Newsprint pages



**#062**  
**v01**

- 74470 code
- Thin cover
- Newsprint pages



**#062**  
**v02**

- 73361 code
- Thin cover
- Newsprint pages



**#063**  
**v01**

- 74470 code
- Thin cover
- Newsprint pages



**#063**  
**v02**

- 73361 code
- Thin cover
- Newsprint pages

Issue 64 is an oddity. The direct edition was sold poly-bagged with a catalog, whereas the newsstand edition was not.

It is the only issue that has the barcode on the back cover instead of the front.



**#060**  
**v01**

- 74470 code
- Thin cover
- Newsprint pages
- Page order 1-32 (same as direct)



**#060**  
**v02**

- 73361 code
- Thin cover
- Newsprint pages
- Page order: 9-17, 1-8, 25-32, 17-24

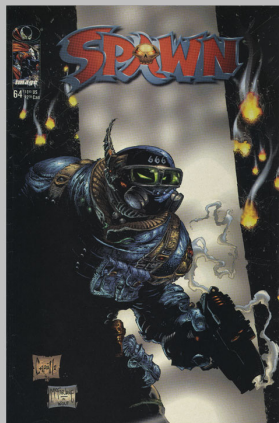


#64 v001 Back Cover

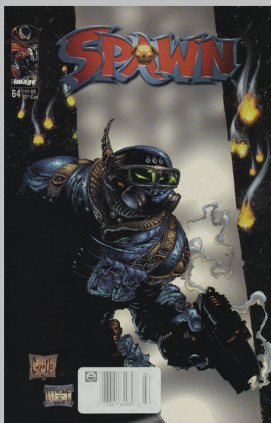


#64 v002 Back Cover

There is also a “corrected” edition with the barcode covered in a plain white sticker, and a new barcode sticker applied by the manufacturer to the front cover.



#64 v001 Front Cover



#64 v002 Front Cover

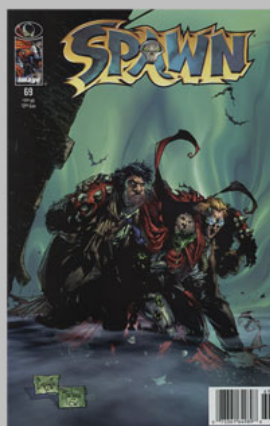
- ☐ **#067 v01**
  - 74470 “Newsstand” code
  - Thin cover
  - Newsprint pages

- ☐ **#067 v02**
  - 73361 “Newsstand” code
  - Thin cover
  - Newsprint pages

- ☐ **#068 v01**
  - 74470 “Newsstand” code
  - Thin cover
  - Newsprint pages

- ☐ **#068 v02**
  - 73361 “Newsstand” code
  - Thin cover
  - Newsprint pages

Issues #69-71 were printed on the same thick, glossy paper as their direct edition counterparts. They seem to have been distributed in far fewer numbers than many other newsstand issues, and only from the secondary distributor.



Newsstand Edition



Direct Edition

- ☐ **#069**
  - 73361 code
  - Thin cover
  - Glossy pages (same as direct)

- ☐ **#070**
  - 73361 code
  - Thin cover
  - Glossy pages (same as direct)

- ☐ **#071**
  - 73361 code
  - Thin cover
  - Glossy pages (same as direct)

- ☐ **#064 v01**
  - 74470 code on the back cover
  - No polybag or catalog
  - Thin cover
  - Newsprint pages
  - (No barcode sticker)

- ☐ **#064 v02**
  - 73361 code “e” sticker on front
  - Barcode on back cover covered in a blank white sticker
  - No polybag or catalog
  - Thin cover
  - Newsprint pages

- ☐ **#065 v01**
  - 74470 code
  - Thin cover
  - Newsprint pages

- ☐ **#065 v02**
  - 73361 code
  - Thin cover
  - Newsprint pages

- ☐ **#066 v01**
  - 74470 code
  - Thin cover
  - Newsprint pages

- ☐ **#066 v02**
  - 73361 code
  - Thin cover
  - Newsprint pages

☐

#072

v01

- 14302 code
- Thin cover
- Newsprint pages

☐

#072

v02

- 73361 code
- Thin cover
- Newsprint pages

☐

#073

v01

- 14302 code
- Thin cover
- Newsprint pages

☐

#073

v02

- 73361 code
- Thin cover
- Newsprint pages

☐

#074

v01

- 14302 code
- Thin cover
- Newsprint pages

☐

#074

v02

- 73361 code
- Thin cover
- Newsprint pages

☐

#075

v01

- 14302 code
- Thin cover
- Newsprint pages

☐

#075

v02

- 73361 code
- Thin cover
- Newsprint pages

☐

#076

v01

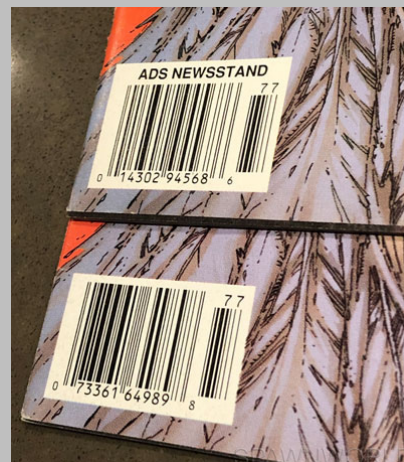
- 14302 code
- Thin cover
- Newsprint pages

☐

#076

v02

- 73361 code
- Thin cover
- Newsprint pages



Issue #77 was released with two different barcode types: the “ADS Newsstand” code (top) from the primary distributor, and the “standard” code (bottom) from the secondary distributor.

This was the final issue with two distributors.

☐

#077

v01

- 14302 “ADS Newsstand” code
- Thin cover
- Newsprint pages
- Prices in black text within a white box

☐

#077

v02

- 73361 code
- Thin cover
- Newsprint pages
- Prices in black text within a white box

☐

#078

- 14302 code
- Thin cover
- Newsprint pages

☐

#079

- 14302 code
- Thin cover
- Newsprint pages

☐

#080

- 14302 code
- Thin cover
- Newsprint pages

☐

#081

- 14302 code
- Thin cover
- Newsprint pages

☐

#082

- 14302 code
- Thin cover
- Newsprint pages





- #083**
- 14302 code
  - (cover paper same as direct)
  - Newsprint pages



- #084**
- 14302 code
  - Thin cover
  - Newsprint pages



- #085**
- 14302 code
  - Thin cover
  - Newsprint pages



- #086**
- 14302 code
  - Thin cover
  - Newsprint pages



- #087**
- 14302 code
  - (cover paper same as direct)
  - Newsprint pages



- #088**
- 14302 code
  - (cover paper same as direct)
  - Newsprint pages



- #089**
- 14302 code
  - Thin cover
  - Newsprint pages



- #090**
- 14302 code
  - Thin cover
  - Newsprint pages



- #091**
- 14302 code
  - (cover paper same as direct)
  - Newsprint pages



- #092**
- 14302 code
  - (cover paper same as direct)
  - Newsprint pages



- #093**
- 14302 code
  - Thin cover
  - Newsprint pages



- #094**
- 14302 "Newsstand" code
  - Thin cover
  - Newsprint pages



- #095**
- 14302 code
  - Thin cover
  - Newsprint pages



- #096**
- 14302 code
  - (cover paper same as direct)
  - Newsprint pages



- #097**
- 14302 code
  - (cover paper same as direct)
  - Newsprint pages



- #098**
- 74470 "Newsstand" code
  - Thin cover
  - Newsprint pages



- #099**
- 74470 code
  - (cover paper same as direct)
  - Newsprint pages



- #100**
- 25274 code
  - "McFarlane" variant cover only
  - (cover paper same as direct)
  - Newsprint pages

Issues 101-105 have, by far, the greatest number of variations due primarily to the various correction stickers applied by the manufacturer to the barcodes. There are 4 basic types of stickers that were used, as seen here on issue #101:



Additionally, some of the correction stickers themselves had errors on them that were changed. The last two digits in the barcode typically designate the issue numbers. But on some of the stickers, the code for the previous issue was re-used by mistake.



In this example from issue #104, notice the "Prices" sticker had the last 2 digits '13', which was the code for issue #103.

Subsequent issues had the adjusted '14' issue code stickers applied.

- ☐ **#101 v04**
  - 74470 code on "e" sticker
  - (cover paper same as direct)
  - Newsprint pages

- ☐ **#102 v01**
  - 74470 code (no sticker)
  - Thin cover
  - Newsprint pages

- ☐ **#102 v02**
  - 74470 code on "Prices" Sticker
  - 11 issue code
  - Thin cover
  - Newsprint pages

- ☐ **#102 v03**
  - 74470 code on "Prices" Sticker
  - 12 issue code
  - Thin cover
  - Newsprint pages

- ☐ **#102 v04**
  - 74470 code on "e" sticker
  - Thin cover
  - Newsprint pages

- ☐ **#103 v01**
  - 74470 code (no sticker)
  - Thin cover
  - Newsprint pages

- ☐ **#103 v02**
  - 74470 code on "Prices" Sticker
  - 12 issue code
  - Thin cover
  - Newsprint pages

- ☐ **#103 v03**
  - 74470 code on "Prices" Sticker
  - 13 issue code
  - Thin cover
  - Newsprint pages

- ☐ **#103 v04**
  - 14302 code on "Prices" Sticker
  - 12 issue code
  - Thin cover
  - Newsprint pages

- ☐ **#103 v05**
  - 14302 code on "Prices" Sticker
  - 13 issue code
  - Thin cover
  - Newsprint pages

- ☐ **#101 v01**
  - 74470 code (no sticker)
  - (cover paper same as direct)
  - Newsprint pages

- ☐ **#101 v02**
  - 74470 code on "Prices" Sticker
  - (cover paper same as direct)
  - Newsprint pages

- ☐ **#101 v03**
  - 74470 code on "No Prices" sticker
  - (cover paper same as direct)
  - Newsprint pages

☐

#103

v06

- 74470 code on “No Prices” Sticker
- 13 issue code
- Thin cover
- Newsprint pages

☐

#103

v07

- 74470 code on “e” Sticker
- Thin cover
- Newsprint pages

☐

#104

v01

- 74470 code (no sticker)
- Thin cover
- Newsprint pages

☐

#104

v02

- 74470 code on “Prices” Sticker
- 13 issue code
- Thin cover
- Newsprint pages

☐

#104

v03

- 74470 code on “Prices” Sticker
- 14 issue code
- Thin cover
- Newsprint pages

☐

#104

v04

- 14302 code on “Prices” Sticker
- 13 issue code
- Thin cover
- Newsprint pages

☐

#104

v05

- 74470 code on “No Prices” Sticker
- 14 issue code
- Thin cover
- Newsprint pages

☐

#104

v06

- 74470 code on “e” Sticker
- Thin cover
- Newsprint pages

☐

#105

v01

- 74470 code (no sticker)
- Thin cover
- Newsprint pages

☐

#105

v02

- 74470 code on “e” Sticker
- Thin cover
- Newsprint pages

☐

#106

- 74470 code
- Thin cover
- Newsprint pages

☐

#107

- 74470 code
- Thin cover
- Newsprint pages

☐

#108

- 74470 code
- Thin cover
- Newsprint pages

☐

#109

v01

- 74470 code (no sticker)
- Thin cover
- Newsprint pages

☐

#109

v02

- 74470 code on “Canada” sticker
- Thin cover
- Newsprint pages

☐

#110

- 74470 code
- (cover paper same as direct)
- Newsprint pages

☐

#111

- 74470 code
- Thin cover
- Newsprint pages

☐

#112

- 74470 code
- Thin cover
- Newsprint pages

Issues #113-115 were released only in direct edition format. No newsstand editions exist.

Issue #116 was printed on the same glossy paper as its direct edition counterpart.

☐

#116

- 74470 code
- (cover paper same as direct)
- Glossy pages (same as direct)

☐

#117

- 74470 code
- Thin cover
- Newsprint pages



☐
**#118**

- 74470 code
- Thin cover
- Newsprint pages

☐
**#119**

- 74470 code
- Thin cover
- Newsprint pages

☐
**#120**

- 74470 code
- Thin cover
- Newsprint pages

☐
**#121**

- 74470 code
- Thin cover
- Newsprint pages

☐
**#122**

- 74470 code
- Thin cover
- Newsprint pages

The final 15 newsstand issues (Issues #123-#137), were all printed on the same glossy paperstock as the direct editions (for both the cover and interior pages)

☐
**#123**

- 74470 code
- (cover paper same as direct)
- Glossy pages (same as direct)

☐
**#124**

- 74470 code
- (cover paper same as direct)
- Glossy pages (same as direct)

☐
**#125**

- 74470 code
- (cover paper same as direct)
- Glossy pages (same as direct)

☐
**#126**

- 74470 code
- (cover paper same as direct)
- Glossy pages (same as direct)

☐
**#127**

- 74470 code
- (cover paper same as direct)
- Glossy pages (same as direct)

☐
**#128**

- 74470 code
- (cover paper same as direct)
- Glossy pages (same as direct)

☐
**#129**

- 74470 code
- (cover paper same as direct)
- Glossy pages (same as direct)

☐
**#130**

- 74470 code
- (cover paper same as direct)
- Glossy pages (same as direct)

☐
**#131**

- 74470 code
- (cover paper same as direct)
- Glossy pages (same as direct)

☐
**#132**

- 74470 code
- (cover paper same as direct)
- Glossy pages (same as direct)

☐
**#133**

- 74470 code
- (cover paper same as direct)
- Glossy pages (same as direct)

☐
**#134**

- 74470 code
- (cover paper same as direct)
- Glossy pages (same as direct)

☐
**#135**

- 74470 code
- (cover paper same as direct)
- Glossy pages (same as direct)

☐
**#136**

- 74470 “Thin” code
- (cover paper same as direct)
- Glossy pages (same as direct)

☐
**#137**

- 74470 “Thin” code
- (cover paper same as direct)
- Glossy pages (same as direct)

/ 213 Total

## CURSE OF THE SPAWN

☐ **#01** • 70989 code  
**v01** • Newsprint pages

☐ **#01** • 73361 code  
**v02** • Newsprint pages

☐ **#02** • 70989 code  
**v01** • Newsprint pages

☐ **#02** • 73361 code  
**v02** • Newsprint pages

☐ **#03** • 70989 code  
**v01** • Newsprint pages

☐ **#03** • 73361 code  
**v02** • Newsprint pages

☐ **#04** • 70989 code  
**v01** • Newsprint pages

☐ **#04** • 73361 code  
**v02** • Newsprint pages

☐ **#05** • 70989 code  
**v01** • Newsprint pages

☐ **#05** • 73361 code  
**v02** • Newsprint pages

☐ **#06** • 70989 code  
**v01** • Newsprint pages

☐ **#06** • 73361 code  
**v02** • Newsprint pages

☐ **#07** • 70989 code  
**v01** • Newsprint pages

☐ **#07** • 73361 code  
**v02** • Newsprint pages

☐ **#08** • 70989 code  
**v01** • Newsprint pages

☐ **#08** • 73361 code  
**v02** • Newsprint pages



Curse of the Spawn #9 has a unique “boxless” barcode.

☐ **#09** • 70989 “Boxless” code  
**v01** • Newsprint pages

☐ **#09** • 73361 “Boxless” code  
**v02** • Newsprint pages

☐ **#10** • 70989 code  
**v01** • Newsprint pages

☐ **#10** • 73361 code  
**v02** • Newsprint pages

☐ **#11** • 70989 code  
**v01** • Newsprint pages

☐ **#11** • 73361 code  
**v02** • Newsprint pages

<input type="checkbox"/>	<b>#12</b> <b>v01</b>	<ul style="list-style-type: none"> <li>• 70989 code</li> <li>• Newsprint pages</li> </ul>
--------------------------	--------------------------	---

<input type="checkbox"/>	<b>#12</b> <b>v02</b>	<ul style="list-style-type: none"> <li>• 73361 code</li> <li>• Newsprint pages</li> </ul>
--------------------------	--------------------------	---

<input type="checkbox"/>	<b>#13</b> <b>v01</b>	<ul style="list-style-type: none"> <li>• 70989 code</li> <li>• Newsprint pages</li> </ul>
--------------------------	--------------------------	---

<input type="checkbox"/>	<b>#13</b> <b>v02</b>	<ul style="list-style-type: none"> <li>• 73361 code</li> <li>• Newsprint pages</li> </ul>
--------------------------	--------------------------	---

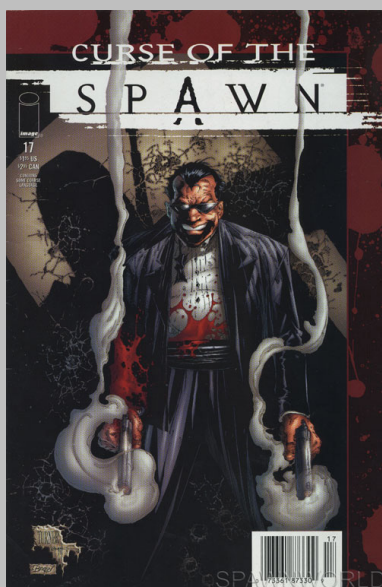
<input type="checkbox"/>	<b>#14</b> <b>v01</b>	<ul style="list-style-type: none"> <li>• 70989 code</li> <li>• Newsprint pages</li> </ul>
--------------------------	--------------------------	---

<input type="checkbox"/>	<b>#14</b> <b>v02</b>	<ul style="list-style-type: none"> <li>• 73361 code</li> <li>• Newsprint pages</li> </ul>
--------------------------	--------------------------	---

<input type="checkbox"/>	<b>#15</b> <b>v01</b>	<ul style="list-style-type: none"> <li>• 70989 code</li> <li>• Newsprint pages</li> </ul>
--------------------------	--------------------------	---

<input type="checkbox"/>	<b>#15</b> <b>v02</b>	<ul style="list-style-type: none"> <li>• 73361 code</li> <li>• Newsprint pages</li> </ul>
--------------------------	--------------------------	---

Issues #16-19 were printed on the same thick, glossy paper as their direct edition counterparts, and were only released from the secondary distributor.



Curse of the Spawn #17 newsstand edition is one of the rarest Spawn comics there is – fewer than 10 copies are known to exist.

<input type="checkbox"/>	<b>#16</b>	<ul style="list-style-type: none"> <li>• 73361 code</li> <li>• Glossy pages (same as direct)</li> </ul>
--------------------------	------------	---

<input type="checkbox"/>	<b>#17</b>	<ul style="list-style-type: none"> <li>• 73361 code</li> <li>• Glossy pages (same as direct)</li> </ul>
--------------------------	------------	---

<input type="checkbox"/>	<b>#18</b>	<ul style="list-style-type: none"> <li>• 73361 code</li> <li>• Glossy pages (same as direct)</li> </ul>
--------------------------	------------	---

<input type="checkbox"/>	<b>#19</b>	<ul style="list-style-type: none"> <li>• 73361 code</li> <li>• Glossy pages (same as direct)</li> </ul>
--------------------------	------------	---

<input type="checkbox"/>	<b>#20</b> <b>v01</b>	<ul style="list-style-type: none"> <li>• 14302 code</li> <li>• Newsprint pages</li> </ul>
--------------------------	--------------------------	---

<input type="checkbox"/>	<b>#20</b> <b>v02</b>	<ul style="list-style-type: none"> <li>• 73361 code</li> <li>• Newsprint pages</li> </ul>
--------------------------	--------------------------	---

Issues 21 and 22 both had barcode adjustment stickers applied by the manufacturer.



<input type="checkbox"/>	<b>#21</b> <b>v01</b>	<ul style="list-style-type: none"> <li>• 14302 code on "No Prices" sticker</li> <li>• Newsprint pages</li> </ul>
--------------------------	--------------------------	--

<input type="checkbox"/>	<b>#21</b> <b>v02</b>	<ul style="list-style-type: none"> <li>• 73361 code on "e" sticker</li> <li>• Newsprint pages</li> </ul>
--------------------------	--------------------------	--





☐ **#22** • 14302 code (no sticker)  
**v01** • Newsprint pages

☐ **#22** • 73361 code on “e” sticker  
**v02** • Newsprint pages

☐ **#23** • 14302 code  
**v01** • Newsprint pages

☐ **#23** • 73361 code  
**v02** • Newsprint pages

☐ **#24** • 14302 code  
**v01** • Newsprint pages

☐ **#24** • 73361 code  
**v02** • Newsprint pages

☐ **#25** • 14302 “ADS Newsstand” code  
**v01** • Newsprint pages

☐ **#25** • 73361 code  
**v02** • Newsprint pages

☐ **#26** • 14302 code  
• Newsprint pages

☐ **#27** • 14302 code  
• Newsprint pages

☐ **#28** • 14302 code  
• Newsprint pages

☐ **#29** • 14302 code  
• Newsprint pages

Issue #25 was the final issue with two distributors.

\_\_\_\_ / 50 Total

## SPAWN: THE DARK AGES

<input type="checkbox"/>	<b>#01</b>	<ul style="list-style-type: none"><li>• 14302 code</li><li>• Newsprint pages</li></ul>
<input type="checkbox"/>	<b>#02</b>	<ul style="list-style-type: none"><li>• 14302 code</li><li>• Newsprint pages</li></ul>
<input type="checkbox"/>	<b>#03</b>	<ul style="list-style-type: none"><li>• 14302 code</li><li>• Newsprint pages</li></ul>
<input type="checkbox"/>	<b>#04</b>	<ul style="list-style-type: none"><li>• 14302 code</li><li>• Newsprint pages</li></ul>
<input type="checkbox"/>	<b>#05</b>	<ul style="list-style-type: none"><li>• 14302 code</li><li>• Newsprint pages</li></ul>
<input type="checkbox"/>	<b>#06</b>	<ul style="list-style-type: none"><li>• 14302 code</li><li>• Newsprint pages</li></ul>
<input type="checkbox"/>	<b>#07</b>	<ul style="list-style-type: none"><li>• 14302 code</li><li>• Newsprint pages</li></ul>
<input type="checkbox"/>	<b>#08</b>	<ul style="list-style-type: none"><li>• 14302 "Newsstand" code</li><li>• Newsprint pages</li></ul>
<input type="checkbox"/>	<b>#09</b>	<ul style="list-style-type: none"><li>• 14302 code</li><li>• Newsprint pages</li></ul>
<input type="checkbox"/>	<b>#10</b>	<ul style="list-style-type: none"><li>• 14302 code</li><li>• Newsprint pages</li></ul>
<input type="checkbox"/>	<b>#11</b>	<ul style="list-style-type: none"><li>• 14302 "Newsstand" code</li><li>• Newsprint pages</li></ul>
<input type="checkbox"/>	<b>#12</b>	<ul style="list-style-type: none"><li>• 14302 code</li><li>• Newsprint pages</li></ul>
<input type="checkbox"/>	<b>#13</b>	<ul style="list-style-type: none"><li>• 14302 code</li><li>• Newsprint pages</li></ul>
<input type="checkbox"/>	<b>#14</b>	<ul style="list-style-type: none"><li>• 14302 code</li><li>• Newsprint pages</li></ul>

<input type="checkbox"/>	<b>#15</b>	<ul style="list-style-type: none"><li>• 14302 code</li><li>• Newsprint pages</li></ul>
<input type="checkbox"/>	<b>#16</b>	<ul style="list-style-type: none"><li>• 14302 code</li><li>• Newsprint pages</li></ul>
<input type="checkbox"/>	<b>#17</b>	<ul style="list-style-type: none"><li>• 14302 code</li><li>• Newsprint pages</li></ul>
<input type="checkbox"/>	<b>#18</b>	<ul style="list-style-type: none"><li>• 14302 code</li><li>• Newsprint pages</li></ul>
<input type="checkbox"/>	<b>#19</b>	<ul style="list-style-type: none"><li>• 14302 code</li><li>• Newsprint pages</li></ul>
<input type="checkbox"/>	<b>#20</b>	<ul style="list-style-type: none"><li>• 14302 code</li><li>• Newsprint pages</li></ul>
<input type="checkbox"/>	<b>#21</b>	<ul style="list-style-type: none"><li>• 14302 code</li><li>• Newsprint pages</li></ul>
<input type="checkbox"/>	<b>#22</b>	<ul style="list-style-type: none"><li>• 14302 code</li><li>• Newsprint pages</li></ul>
<input type="checkbox"/>	<b>#23</b>	<ul style="list-style-type: none"><li>• 14302 code</li><li>• Newsprint pages</li></ul>
<input type="checkbox"/>	<b>#24</b>	<ul style="list-style-type: none"><li>• 14302 code</li><li>• Newsprint pages</li></ul>
<input type="checkbox"/>	<b>#25</b>	<ul style="list-style-type: none"><li>• 14302 code</li><li>• Newsprint pages</li></ul>
<input type="checkbox"/>	<b>#26</b>	<ul style="list-style-type: none"><li>• 14302 code</li><li>• Newsprint pages</li></ul>
<input type="checkbox"/>	<b>#27</b>	<ul style="list-style-type: none"><li>• 14302 code</li><li>• Newsprint pages</li></ul>
<input type="checkbox"/>	<b>#28</b>	<ul style="list-style-type: none"><li>• 14302 code</li><li>• Glossy pages (same as direct)</li></ul>

\_\_\_\_ / 28 Total

# MISCELLANEOUS

## SPAWN BIBLE

<input type="checkbox"/>	<b>#01</b>	<ul style="list-style-type: none"><li>• 70989 code</li><li>• Newsprint pages</li></ul>
--------------------------	------------	--

## SPAWN / BATMAN

<input type="checkbox"/>	<b>#01</b>	<ul style="list-style-type: none"><li>• 70989 yellow code on back cover</li><li>• Glossy pages (same as direct)</li></ul>
--------------------------	------------	---

## ANGELA

<input type="checkbox"/>	<b>#01</b>	<ul style="list-style-type: none"><li>• 70989 yellow code on back cover</li><li>• Glossy pages (same as direct)</li></ul>
--------------------------	------------	---

<input type="checkbox"/>	<b>#02</b>	<ul style="list-style-type: none"><li>• 70989 yellow code on back cover</li><li>• Glossy pages (same as direct)</li></ul>
--------------------------	------------	---

<input type="checkbox"/>	<b>#03</b>	<ul style="list-style-type: none"><li>• 70989 yellow code on back cover</li><li>• Glossy pages (same as direct)</li></ul>
--------------------------	------------	---

## VIOLATOR

<input type="checkbox"/>	<b>#01</b> <b>v01</b>	<ul style="list-style-type: none"><li>• 70989 code</li><li>• Newsprint pages</li></ul>
--------------------------	--------------------------	--

<input type="checkbox"/>	<b>#01</b> <b>v02</b>	<ul style="list-style-type: none"><li>• 73361 code</li><li>• Newsprint pages</li></ul>
--------------------------	--------------------------	--

<input type="checkbox"/>	<b>#02</b> <b>v01</b>	<ul style="list-style-type: none"><li>• 70989 code</li><li>• Newsprint pages</li></ul>
--------------------------	--------------------------	--

<input type="checkbox"/>	<b>#02</b> <b>v02</b>	<ul style="list-style-type: none"><li>• 73361 code</li><li>• Newsprint pages</li></ul>
--------------------------	--------------------------	--

<input type="checkbox"/>	<b>#03</b> <b>v01</b>	<ul style="list-style-type: none"><li>• 70989 code</li><li>• Newsprint pages</li></ul>
--------------------------	--------------------------	--

<input type="checkbox"/>	<b>#03</b> <b>v02</b>	<ul style="list-style-type: none"><li>• 73361 code</li><li>• Newsprint pages</li></ul>
--------------------------	--------------------------	--

## SPAWN: BLOODFEUD

<input type="checkbox"/>	<b>#01</b>	<ul style="list-style-type: none"><li>• 70989 code</li><li>• Newsprint pages</li></ul>
--------------------------	------------	--

<input type="checkbox"/>	<b>#02</b>	<ul style="list-style-type: none"><li>• 70989 code</li><li>• Newsprint pages</li></ul>
--------------------------	------------	--

<input type="checkbox"/>	<b>#03</b>	<ul style="list-style-type: none"><li>• 70989 code</li><li>• Newsprint pages</li></ul>
--------------------------	------------	--

<input type="checkbox"/>	<b>#04</b>	<ul style="list-style-type: none"><li>• 70989 code</li><li>• Newsprint pages</li></ul>
--------------------------	------------	--

## SPAWN: BLOODFEUD

<input type="checkbox"/>	<b>#01</b>	<ul style="list-style-type: none"><li>• 70989 code</li><li>• Newsprint pages</li></ul>
--------------------------	------------	--

<input type="checkbox"/>	<b>#02</b>	<ul style="list-style-type: none"><li>• 70989 code</li><li>• Newsprint pages</li></ul>
--------------------------	------------	--

<input type="checkbox"/>	<b>#03</b>	<ul style="list-style-type: none"><li>• 70989 code</li><li>• Newsprint pages</li></ul>
--------------------------	------------	--

<input type="checkbox"/>	<b>#04</b>	<ul style="list-style-type: none"><li>• 74470 code</li><li>• Newsprint pages</li></ul>
--------------------------	------------	--

## SPAWN THE IMPALER

<input type="checkbox"/>	<b>#01</b>	<ul style="list-style-type: none"><li>• 70989 code</li><li>• Newsprint pages</li></ul>
--------------------------	------------	--

<input type="checkbox"/>	<b>#02</b>	<ul style="list-style-type: none"><li>• 70989 code</li><li>• Newsprint pages</li></ul>
--------------------------	------------	--

<input type="checkbox"/>	<b>#03</b>	<ul style="list-style-type: none"><li>• 70989 code</li><li>• Newsprint pages</li></ul>
--------------------------	------------	--

## MEDIEVAL SPAWN / WITCHBLADE

<input type="checkbox"/>	<b>#01</b>	• 70989 code
	<b>v01</b>	• Newsprint pages

<input type="checkbox"/>	<b>#01</b>	• 73361 code
	<b>v02</b>	• Newsprint pages

<input type="checkbox"/>	<b>#02</b>	• 70989 code
	<b>v01</b>	• Newsprint pages

<input type="checkbox"/>	<b>#02</b>	• 73361 code
	<b>v02</b>	• Newsprint pages

<input type="checkbox"/>	<b>#03</b>	• 70992 code
	<b>v01</b>	• Newsprint pages

<input type="checkbox"/>	<b>#03</b>	• 73361 code
	<b>v02</b>	• Newsprint pages

\_\_\_\_ / 28 Total

\_\_\_\_ / 319 Grand Total

Last updated 3/24/2022