



THE DEFINITIVE GUIDE TO

SPAWN NEWSSTAND EDITIONS

SpawnWorld.com

What are Newsstand Editions?

Like most comics of the early 90s, Spawn was sold in two distinct formats: Direct Edition and Newsstand Edition. Generally speaking, Direct Edition issues were sold from comic book stores, and Newsstand Edition issues were sold from places like grocery stores, drug stores, and of course, newsstands.

In terms of collecting, Newsstand Editions differ from Direct Editions in a few important ways:

- First, they were generally sold on spinner racks or open shelves, often to non-collectors. This means that issues that survive are typically in worse condition than their Direct Edition counterparts.
- Second, they were typically printed on lower quality paper that was thinner, and more susceptible to damage, making high grade copies even more difficult to find.
- Third, they were sometimes return-able. Meaning that unsold copies could be returned to the publisher by the retailer for a refund. This further decreased the number of issues remaining in the market today.

Spawn Newsstand Editions

Spawn Newsstand Editions were sold (with a few exceptions) until August 2004. They were generally printed on a thinner newsprint paper, with a thinner paperstock for the cover than the direct editions. They almost always have a barcode on the front cover (unlike the direct editions) - which is the easiest way to spot them.

A Note about Variants:

Below you'll find a complete checklist of every known Spawn Newsstand Edition, including all known production variants. But what constitutes a variant? Occasionally there were production changes on newsstand issues, resulting in variants. Most often, these involved the barcode itself, but sometimes they involved the contents, or the paper quality of the book. This list includes intentional changes that resulted in significant differences for all remaining issues published down the line. It does not include production errors that resulted in only an issue or two with an abnormality.

FAQ

How can you tell the difference between the various paper qualities?

It's very easy to feel the differences when examining both newsstand and direct editions side-by-side, but it can be difficult to describe otherwise. The easiest way to quantify the difference is to weigh the books.

Are there Newsstand Editions of variant covers?

No. Spawn books with variant covers (such as issue #100, or Spawn: The Dark Ages #1) only received 1 newsstand edition, which uses the "standard" cover (regardless of the number of variant covers).

Is a barcode and a UPC code the same thing?

Technically, no. A UPC code is a specific format of barcode, although the name tends to be used generically by the public (kind of like Kleenex).

Why are some of the printed barcodes different?

There are a few styles of barcode that were used:

- "Standard" barcodes with no additional text.
- "Newsstand" barcodes with the word "NEWSSTAND" above the code.
- "ADS Newsstand" barcodes with the text "ADS NEWSSTAND" above the code.
- "Thin" barcodes that are roughly half the height of standard codes.

I do not know why the style changed occasionally. Sometimes an error was made on the barcode (issues 101-105 in particular) in which a correction sticker was placed on top.

Why did they stop making Newsstand Editions?

Presumably, they became unprofitable. As far as I'm aware, Spawn was the last Image Comics book with a newsstand edition (it was also the first!).

Were Newsstand Editions released 1:100 from Direct Editions?

No. Part of the confusion with this claim comes from semantics. In discussing comics, ratios like 1:25, or 1:00 refer to retailer incentives. Meaning, a retailer would have to order 25 standard issues to receive 1 incentive issue, resulting in a 1:25 incentive. It does not refer to how many were printed. Newsstand Editions were never incentive issues.

Ok, but are there 100 standard issues for every one newsstand?

Not necessarily. Spawn print sizes are not publicly released. The best we can do is to make a guess based on industry patterns and order numbers from Diamond distribution.

- We can reasonably assume that newsstands were printed at a low percentage of the total (compared to the print run for the issue).
- We can reasonably assume that the ratio of Newsstand to Direct Editions declined as time went on.



- We can reasonably assume that there are fewer Newsstand Editions that survive in circulation because of return-ability and clientele.

But someone said that 99% of comics released by Image Comics were Direct Editions, with only 1% being newsstands?

It's not possible to determine the actual percentage with currently available data. Image Comics has not released any concrete data on the ratio (nor has McFarlane).

Why do some barcodes have a sticker placed over them?

Some of the barcodes were printed incorrectly, and correction stickers were placed over the top by the publisher. Some stickers also seem to be for regional distribution.

Should I try to remove the stickers?

No. As the stickers were placed there by the manufacturer, they are a part of the original item. They're different than a price sticker added by a retailer.

Why are some of the barcode correction stickers different?

There are 4 distinct types of barcode stickers used:

- "Prices" stickers with US and Canadian retail prices listed.
- "No Price" stickers with no prices or text except for the barcode itself.
- "E" stickers with a lower-case "e" icon preceding the barcode.
- "Canada" stickers with Canadian retail price listed.

I've not yet determined why the sticker changes were made, although some appear to be intended for distribution to different regions.

Where are issues 113-115?

For whatever reason, these issues never made it to market.

Interestingly, issue 112 can be found in abnormally high quantities, because it remained on the shelves for 4 months.

Where is Curse of the Spawn 17?

Although copies of this book have been found, it would appear it was never actually distributed. Fewer than 5 copies are known to exist.

What's the deal with issue 60?

A portion of the production run were assembled with the pages out of order. Ordinarily this would get qualified as an "error" and not be listed, however, the number of books with this error is significant and may exceed the corrected editions.

What's the deal with issue 64?

This issue is unique in that its barcode is on the back cover instead of the front. At some point during production, the code on the back was "corrected" by covering it with a plain white sticker, and placing a new barcode sticker on the front cover (with an updated code).

Why are issues 69-71 so hard to find?

Unlike most newsstand issues, these were printed on thick, glossy paper, identical to the Direct Editions. Likewise, during this same period, Curse of the Spawn issues 16-19 were printed on the



same thick, glossy paper. Perhaps there was a problem with the supply of newsprint paper at this time? For whatever the reason, far fewer of these issues are in circulation.

Where can I find more info or cover photos of these?

You can find cover photos and detailed issue information for every issue in the SpawnWorld Newsstand Editions section (spawnworld.com/books/newsstand.htm).

How much are these worth?

I won't try to keep up with current prices in this guide. The best indicators for current value are completed-auction prices. However, the rarity of these books, especially in high grade, can make them considerably more valuable than their direct edition counterparts.

Does CGC differentiate Spawn newsstand editions from direct editions?

Formerly, CGC did not recognize newsstand editions to be unique except for issue #9. More recently, I'm told they have begun to recognize all Spawn newsstand editions except for issues #1-4, although their policy is applied very inconsistently.

Why was/is issue #9 more unique than the others?

The short answer is, it's not. At least in the past, CGC only differentiated newsstand and direct editions when there were differences beyond just a barcode. So while Spawn 9 newsstand does have a different paperstock than the direct edition, so do the majority of Spawn newsstand editions.

Why wouldn't they recognize issues #1-4?

I have no idea.

Do the issues with barcode stickers receive a green label or blue label from CGC?

I've seen both. Their official policy on this seems to be inconsistent.

Spawn appeared in an issue of _____, why isn't it included here?

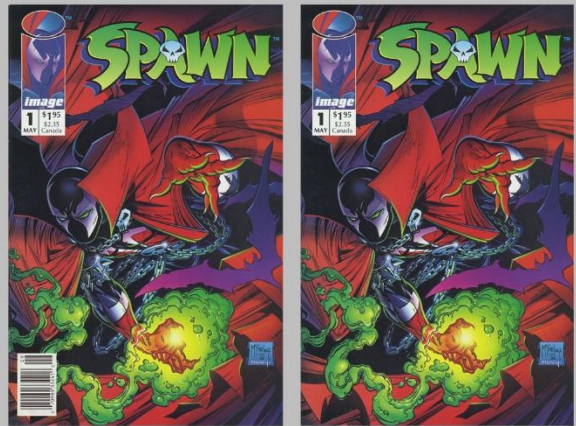
For this list, only issues that meet one of the following requirements have been included:

- A first-party (McFarlane) Spawn-related comic (e.g. Spawn, Angela, etc.)
- A second-party (Image) comic with Spawn, or a primary Spawn character in the title (e.g. Spawn/WildCATS, Medieval Spawn/Witchblade, etc.)

Spawn issue ___ has a barcode on the front cover, is it a newsstand edition?

- For issues #1-137, if it has a barcode on the front cover, it is a newsstand edition.
- For issue #64, if it has a barcode on the back cover, it is a newsstand edition.
- For any issue after #137, even if it has a barcode on the front cover, it is *not* a newsstand edition (issues #192-#199 for example all have barcodes on their front covers).

NEWSSTAND CHECKLIST SPAWN (ONGOING SERIES)



Spawn #1 was the first Image title to be released in a newsstand format. Every Spawn newsstand edition has a barcode printed on the cover (except issue 64). Other differences between newsstand and direct editions are listed here in this checklist.



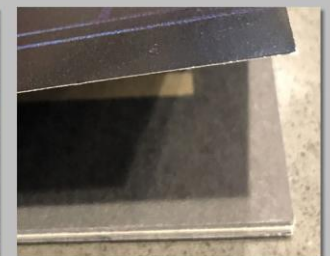
Spawn #1 was printed on the same paper as the direct edition.

Beginning with issue #2, the month was (usually) removed from the newsstand editions.

The paperstock used for the covers of the newsstand editions became thinner (and lighter)



Thick Direct Edition Cover

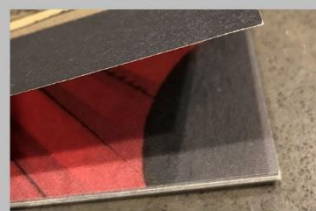


Thin Newsstand Edition Cover

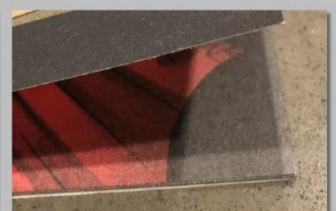
Most noticeable was the change to the weight of the paper used for the interior pages.

The first copies of Issue #2 were released with the same thick newsprint as Issue #1. But mid-production, the paperstock was changed to a thinner, lighter paper. This thinner paper became the standard for newsstand editions (with a few exceptions) until issue 123.

The paper change is easily identified by the weight.



Original newsprint paper



Thinner newsprint paper

- #001
 - "Clean" icon
 - Newsprint pages (same as direct)
 - Poster on glossy paper (same as direct)

- #002
 - Weight ≈ 55g
- v01
 - Thin cover
 - No month in issue number box
 - Newsprint pages (same as direct)

- #002
 - Weight ≈ 43g
- v02
 - Thin cover
 - No month in issue number box
 - Thinner newsprint pages

- #003
 - Weight ≈ 43g
- Thin cover
 - No month in issue number box
 - Thinner newsprint pages

- #004
 - Weight ≈ 43g
- Thin cover
 - Thinner newsprint pages
 - No coupon

- #005
 - Weight ≈ 43g
- Thin cover
 - No month in issue number box
 - Thinner newsprint pages
 - No poster

- #006
 - Weight ≈ 43g
- Thin cover
 - No month in issue number box
 - Thinner newsprint pages

Whereas both editions of Spawn #1 included a poster, issues 4, 5, 7, 8, & 9 all had a poster or coupon in the direct editions that the newsstand editions lacked.

Beginning with Spawn #9, direct editions were printed on a thick, glossy paper (top), whereas newsstand edition pages mostly remained on newsprint (bottom).



#015 • Thin cover
• No month in issue number box
• Newsprint pages

#016 • Thin cover
• No month in issue number box
• Newsprint pages

#017 • Thin cover
• No month in issue number box
• Newsprint pages

#007 • Weight ≈ 43g
• Thin cover
• No month in issue number box
• Thinner newsprint pages
• No poster

#008 • Weight ≈ 43g
• Thin cover
• No month in issue number box
• Thinner newsprint pages
• No poster

#009 • Thin cover
• No month in issue number box
• Newsprint pages
• No poster

#010 • Thin cover
• No month in issue number box
• Newsprint pages

#011 • Thin cover
• No month in issue number box
• Newsprint pages
• Poster on newsprint

#012 • Thin cover
• No month in issue number box
• Newsprint pages
• Poster on newsprint

#013 • Thin cover
• No month in issue number box
• Newsprint pages
• Poster on newsprint

#014 • Thin cover
• No month in issue number box
• Newsprint pages

#018 • Thin cover
• No month in issue number box
• Newsprint pages

#019 • Thin cover
• No month in issue number box
• Newsprint pages

#020 • Thin cover
• No month in issue number box
• Newsprint pages

#021 • Thin cover
• No month in issue number box
• Newsprint pages

#022 • Thin cover
• No month in issue number box
• Newsprint pages

#023 • Thin cover
• No month in issue number box
• Newsprint pages

#024 • Thin cover
• No month in issue number box
• Newsprint pages

#025 • Thin cover
• Newsprint pages

#026 • Thin cover
• No month in issue number box
• Newsprint pages

#027 • Thin cover
• No month in issue number box
• Newsprint pages

#028 • Thin cover
• Newsprint pages
• Inside and outside of back cover are reversed from direct edition (back cover has ad for Power Cards)

The back cover of Spawn #28 newsstand (top) differs from the direct edition (bottom). The ads have been reversed between the inside and outside.



#029 • Thin cover
• No month in issue number box
• Newsprint pages

#030 • Thin cover
• No month in issue number box
• Newsprint pages

#031 • Thin cover
• No month in issue number box
• Newsprint pages

#032 • Thin cover
• No month in issue number box
• Newsprint pages

#033 • Thin cover
• No month in issue number box
• Newsprint pages

#034 • Thin cover
• No month in issue number box
• Newsprint pages

#035 • Thin cover
• Newsprint pages

#036 • Thin cover
• Newsprint pages

#037 • Thin cover
• No month in issue number box
• Newsprint pages

#038 • Thin cover
• Newsprint pages

#039 • Thin cover
• Newsprint pages

#040 • Thin cover
• Newsprint pages

#041 • Thin cover
• No month in issue number box
• Newsprint pages

#042 • Thin cover
• Newsprint pages

#043 • Thin cover
• Newsprint pages

#044 • Thin cover
• Newsprint pages

#045 • Thin cover
• Newsprint pages

#046 • Thin cover
• Newsprint pages



Issue #41 was the last time the month (or lack thereof) differed from the direct edition.

#047 • Thin cover
• Newsprint pages

#048 • Thin cover
• Newsprint pages

#049 • Thin cover
• Newsprint pages

#050 • Thin cover
• Newsprint pages

#051 • Thin cover
• Newsprint pages

#052 • Thin cover
• Newsprint pages

#053 • Thin cover
• Newsprint pages

#054 • Thin cover
• Newsprint pages

#055 • Thin cover
• Newsprint pages

#056 • Thin cover
• Newsprint pages

#057 • Thin cover
• Newsprint pages

#058 • Thin cover
• Newsprint pages

#059 • Thin cover
• Newsprint pages

#060 • Thin cover
v01 • Newsprint pages
• Page order: 9-17, 1-8, 25-32, 17-24

#060 • Thin cover
v02 • Newsprint pages
• (page order same as direct)

#061 • Thin cover
• Newsprint pages

There are two versions of issue #60. The first had the pages out of order, the second corrected the error.

The easiest way to tell them apart is to look at the 1st page.

Below is the correct 1st page, shown in the direct edition (top), and the incorrect first page, shown in v01 of the newsstand edition (bottom).



#062 • Thin cover
• Newsprint pages

#063 • Thin cover
• Newsprint pages

#064 • No polybag or catalog
v01 • Thin cover
• Newsprint pages
• Barcode on back cover, code 0-74470-33241-1
(No barcode sticker)

- #064 v02
 - No polybag or catalog
 - Thin cover
 - Newsprint pages
 - Barcode on back cover covered in a blank white sticker
 - "e" barcode sticker on front cover, code 0-73361-64989-8

- #065
 - Thin cover
 - Newsprint pages

- #066
 - Thin cover
 - Newsprint pages

- #067
 - Thin cover
 - Newsprint pages

- #068
 - Thin cover
 - Newsprint pages
 - "Newsstand" barcode

- #069
 - (Cover paper same as direct)
 - (Glossy pages same as direct)

- #070
 - (Cover paper same as direct)
 - (Glossy pages same as direct)

- #071
 - (Cover paper same as direct)
 - (Glossy pages same as direct)

- #072
 - Thin cover
 - Newsprint pages

- #073
 - Thin cover
 - Newsprint pages

- #074
 - Thin cover
 - Newsprint pages

Issue 64 is an oddity. The direct edition was sold polybagged with a catalog, whereas the newsstand edition was not.

It is the only issue that has the barcode on the back cover instead of the front.

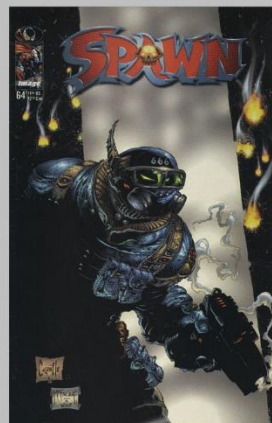


#64 v001 Back Cover



#64 v002 Back Cover

There is also a "corrected" edition with the barcode covered in a plain white sticker, and a new barcode sticker applied by the manufacturer to the front cover.

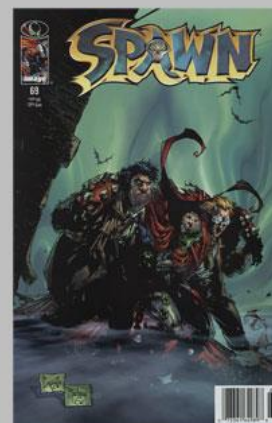


#64 v001 Front Cover



#64 v002 Front Cover

Issues #69-71 were printed on the same thick, glossy paper as their direct edition counterparts. They seem to have been distributed in far fewer numbers than many other newsstand issues.



Newsstand Edition



Direct Edition

- #075 • Thin cover
• Newsprint pages
- #076 • Thin cover
• Newsprint pages
- #077 v01 • Thin cover
• Newsprint pages
• Barcode 0-73361-64989-8
• Prices in black text within a white box
- #077 v02 • Thin cover
• Newsprint pages
• "ADS NEWSSTAND" barcode,
code 0-14302-94568-6
• Prices in black text within a white box
- #078 • Thin cover
• Newsprint pages
- #079 • Thin cover
• Newsprint pages
- #080 • Thin cover
• Newsprint pages
- #081 • Thin cover
• Newsprint pages
- #082 • Thin cover
• Newsprint pages
- #083 • (Cover paper same as direct)
• Newsprint pages
- #084 • Thin cover
• Newsprint pages



Issue #77 was released with two different barcode types: the "ADS Newsstand" code (top), and the "standard" code (bottom).

- #085 • Thin cover
• Newsprint pages
- #086 • Thin cover
• Newsprint pages
- #087 • (Cover paper same as direct)
• Newsprint pages
- #088 • (same as direct)
• Newsprint pages
- #089 • Thin cover
• Newsprint pages
- #090 • Thin cover
• Newsprint pages
- #091 • (Cover paper same as direct)
• Newsprint pages
- #092 • (Cover paper same as direct)
• Newsprint pages
- #093 • Thin cover
• Newsprint pages

Issues 101-105 have, by far, the greatest number of variations due primarily to the various correction stickers applied by the manufacturer to the barcodes. There are 4 basic types of stickers that were used, as seen here on issue #101:



Additionally, some of the correction stickers themselves had errors on them that were changed. The last two digits in the barcode typically designate the issue numbers. But on some of the stickers, the code for the previous issue was re-used by mistake.



In this example from issue #104, notice the "Prices" sticker had the last 2 digits '13', which was the code for issue #103.

Subsequent issues had the adjusted '14' stickers applied.

#101 v04 • (Cover paper same as direct)
• Newsprint pages
• "e" barcode sticker, code 0-74470-94568-0-01

#102 v01 • Thin cover
• Newsprint pages
• Barcode 0-74470-94568-0-00102

#094 • Thin cover
• Newsprint pages
• "Newsstand" barcode

#095 • Thin cover
• Newsprint pages

#096 • (Cover paper same as direct)
• Newsprint pages

#097 • (Cover paper same as direct)
• Newsprint pages

#098 • Thin cover
• Newsprint pages

#099 • (Cover paper same as direct)
• Newsprint pages

#100 • McFarlane cover only
• (Cover paper same as direct)
• Newsprint pages

#101 v01 • (Cover paper same as direct)
• Newsprint pages
• Barcode 0-74470-94568-0-00101>

#101 v02 • (Cover paper same as direct)
• Newsprint pages
• "Prices" barcode sticker, code 0-74470-94568-0-11

#101 v03 • (Cover paper same as direct)
• Newsprint pages
• "No prices" barcode sticker code 0-74470-94568-0-01

#102 • Thin cover
v02 • Newsprint pages
• "Prices" barcode sticker, code 0-74470-94568-0-12

#104 • Thin cover
v04 • Newsprint pages
• "No prices" barcode sticker, code 0-74470-94568-0-14

#103 • Thin cover
v01 • Newsprint pages
• Barcode 0-74470-94568-0-00103

#104 • Thin cover
v05 • Newsprint pages
• "e" barcode sticker, code 0-74470-94568-0-04

#103 • Thin cover
v02 • Newsprint pages
• "Prices" barcode sticker from issue 102, code 0-74470-94568-0-12

#105
v01 • Thin cover
• Newsprint pages
• Barcode 0-74470-94568-0-15

#103 • Thin cover
v03 • Newsprint pages
• "Prices" barcode sticker, code 0-74470-94568-0-13

#105 • Thin cover
v02 • Newsprint pages
• "e" barcode sticker, code 0-74470-94568-0-05

#103 • Thin cover
v04 • Newsprint pages
• "No prices" barcode sticker, code 0-74470-94568-0-13

#106 • Thin cover
• Newsprint pages

#103 • Thin cover
v05 • Newsprint pages
• "e" barcode sticker, code 0-74470-94568-0-03

#107 • Thin cover
• Newsprint pages

#104 • Thin cover
v01 • Newsprint pages
• Barcode 0-74470-94568-0-00014

#108 • Thin cover
• Newsprint pages

#104 • Thin cover
v02 • Newsprint pages
• "Prices" barcode sticker, code 0-14302-96087-0-13

#109 • Thin cover
v01 • Newsprint pages
• Barcode 0-74470-94568-0-19

#104 • Thin cover
v03 • Newsprint pages
• "Prices" barcode sticker, code 0-74470-94568-0-14

#109 • Thin cover
v02 • Newsprint pages
• "Canada" barcode sticker, code 0-74470-94568-0-19

#110 • (Cover paper same as direct)
• Newsprint pages

- #111 • Thin cover
- Newsprint pages

- #112 • Thin cover
- Newsprint pages

- #116 • (Cover paper same as direct)
- (Glossy pages same as direct)

- #117 • Thin cover
- Newsprint pages

- #118 • Thin cover
- Newsprint pages

- #119 • Thin cover
- Newsprint pages

- #120 • Thin cover
- Newsprint pages

- #121 • Thin cover
- Newsprint pages

- #122 • Thin cover
- Newsprint pages

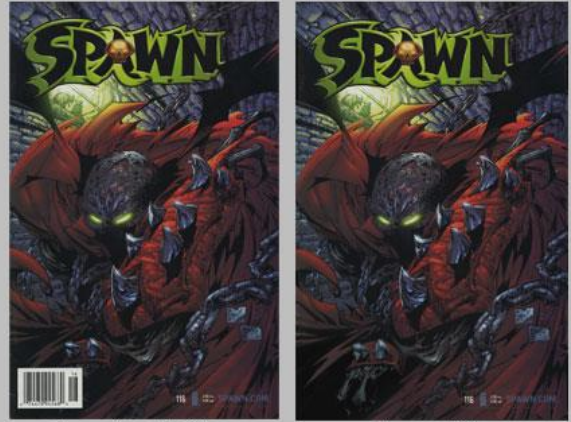
- #123 • (Cover paper same as direct)
- (Glossy pages same as direct)

- #124 • (Cover paper same as direct)
- (Glossy pages same as direct)

- #125 • (Cover paper same as direct)
- (Glossy pages same as direct)

Issues #113-115 were released only in direct edition format. No newsstand editions exist.

Issue #116 was printed on the same glossy paper as its direct edition counterpart.



Newsstand Edition

Direct Edition

The final 15 newsstand issues (Issues #123-#137), were all printed on the same paperstock as the direct editions (for both the cover and interior pages).

- #126 • (Cover paper same as direct)
- (Glossy pages same as direct)

- #127 • (Cover paper same as direct)
- (Glossy pages same as direct)

- #128 • (Cover paper same as direct)
- (Glossy pages same as direct)

- #129 • (Cover paper same as direct)
- (Glossy pages same as direct)

- #130 • (Cover paper same as direct)
- (Glossy pages same as direct)

- #131 • (Cover paper same as direct)
- (Glossy pages same as direct)

- #132 • (Cover paper same as direct)
- (Glossy pages same as direct)

- #133 • (Cover paper same as direct)
• (Glossy pages same as direct)

- #134 • (Cover paper same as direct)
• (Glossy pages same as direct)

- #135 • (Cover paper same as direct)
• (Glossy pages same as direct)

- #136 • (Cover paper same as direct)
• (Glossy pages same as direct)
• "Thin" barcode

- #137 • (Cover paper same as direct)
• (Glossy pages same as direct)
• "Thin" barcode



Issues #136 and #137 were the only two issues to use the "thin" barcode style. #137 was the final newsstand edition released.

___ /155 Total

CURSE OF THE SPAWN

#01 • Newsprint pages

#02 • Newsprint pages

#03 • Newsprint pages

#04 • Newsprint pages

#05 • Newsprint pages

#06 • Newsprint pages

#07 • Newsprint pages

#08 • Newsprint pages

#09 • Newsprint pages
• "Boxless" barcode

#10 • Newsprint pages

#11 • Newsprint pages

#12 • Newsprint pages

#13 • Newsprint pages

#14 • Newsprint pages
• "Newsstand" barcode

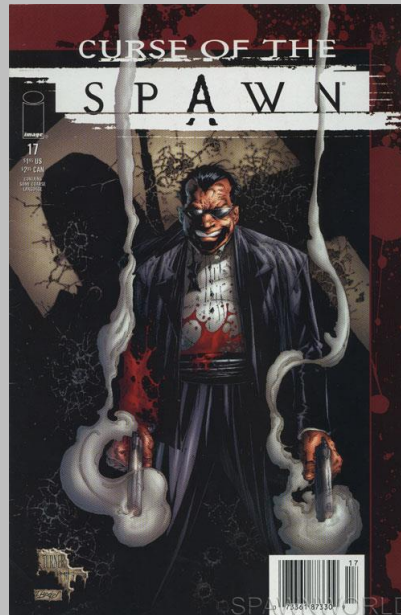


Curse of the Spawn #9 has a unique "boxless" barcode

#15 • Newsprint pages
• "Newsstand" barcode

#16 • Glossy Pages (same as direct)

Issues #16-19 were printed on the same thick, glossy paper as their direct edition counterparts.



Curse of the Spawn #17 newsstand edition is one of the rarest Spawn comics there is – fewer than 5 copies are known to exist.

#17 • Glossy Pages (same as direct)

#18 • Glossy Pages (same as direct)

- #19 • Glossy Pages (same as direct)
- #20 • Newsprint pages
- #21 • Newsprint pages
• "No prices" barcode sticker,
v01 code 0 14302 94570 9 21
- #21 • Newsprint pages
• "e" barcode sticker,
v02 code 0 73361 87330 9 21
- #22 • Newsprint pages
v01 • Barcode 0 14302 94570 9 22
- #22 • Newsprint pages
v02 • "e" barcode sticker,
code 0 73361 87330 9 22
- #23 • Newsprint pages
- #24 • Newsprint pages
- #25 • Newsprint pages
• "ADS newsstand" barcode
- #26 • Newsprint pages
- #27 • Newsprint pages
- #28 • Newsprint pages
- #29 • Newsprint pages

Issues 21 and 22 both had barcode adjustment stickers applied by the manufacturer.



_____/31 Total

SPAWN: THE DARK AGES

#01 • Newsprint pages

#02 • Newsprint pages

#03 • Newsprint pages

#04 • Newsprint pages

#05 • Newsprint pages

#06 • Newsprint pages

#07 • Newsprint pages

#08 • Newsprint pages
• "Newsstand" barcode

#09 • Newsprint pages

#10 • Newsprint pages

#11 • Newsprint pages
• "Newsstand" barcode

#12 • Newsprint pages

#13 • Newsprint pages

#14 • Newsprint pages

#15 • Newsprint pages

#16 • Newsprint pages

#17 • Newsprint pages

#18 • Newsprint pages

#19 • Newsprint pages

#20 • Newsprint pages

#21 • Newsprint pages

#22 • Newsprint pages

#23 • Newsprint pages

#24 • Newsprint pages

#25 • Newsprint pages

#26 • Newsprint pages

#27 • Newsprint pages

#28 • Glossy pages (same as direct edition)

____ /28 Total

MISCELLANEOUS

SPAWN BIBLE

#1 • Newsprint pages

SPAWN / BATMAN

#1 • Glossy pages
• Yellow barcode on back cover

ANGELA

#1 • Newsprint pages

#2 • Newsprint pages

#3 • Newsprint pages

VIOLATOR

#1 • Newsprint pages

#2 • Newsprint pages

#3 • Newsprint pages

SPAWN: BLOODFEUD

#1 • Newsprint pages

#2 • Newsprint pages

#3 • Newsprint pages

#4 • Newsprint pages

SPAWN / WILDCATS

#1 • Newsprint pages

#2 • Newsprint pages

#3 • Newsprint pages

#4 • Newsprint pages

MEDIEVAL SPAWN/WITCHBLADE

#1 • Newsprint pages

#2 • Newsprint pages

#3 • Newsprint pages

SPAWN THE IMPALER

#1 • Newsprint pages

#2 • Newsprint pages

#3 • Newsprint pages

___ /22 Total

___ /236 Grand Total

Last Updated 05/16/2020